



## ZHILANDY ORE-BEARING AREA



### ИНВЕСТИЦИОННАЯ ПРИВЛЕКАТЕЛЬНОСТЬ ЖИЛАНДИНСКОЙ ПЛОЩАДИ

- The Area has a huge resource upside potential for various metals (Birynshi deposit, Center ore occurrence). However, the Company is currently in favor of Manganese development (the Suuksu area).
- Geological and geophysical prerequisites have been singled out after the geological exploration work at the Zhilandy ore-bearing area, indicating the prospect of the western part of the territory for the discovery of large copper-porphyry systems (**about 5 million tons of copper and 140 tons of gold**).
- The property is close to major sell markets (China, Russia) with an easy access to via well developed existing infrastructure platform.
- Geology team is experienced in working in the area and similar projects.
- Backed by the Kazakhstani well known and reputable businessmen.

## THE PROJECT HOLDER GENERAL PROFILE

- The project holder, Zhilandy LLC (The Company) is a Kazakhstani legal entity established to explore the Zhilandy ore bearing area; the Company does not hold any other assets.
- The Company signed The Contract No 2435 for the exploration of gold, manganese, platinum, lead, zinc, and bismuth at the Zhilandy ore bearing area located in the Almaty Oblast, Republic of Kazakhstan on the 30th of July 2007, which is valid till 1st of October 2014. The Company has approved the Exploration Working Program, increased the contract territory and has the right to extend the exploration phase for another two years Y2018-Y2010 and then for evaluation of a commercial discovery. The Company has an exclusive right to proceed with mining phase.
- The Company effectively complies with and significantly exceeds its financial obligations under the Contract.

## LOCATION AND INFRASTRUCTURE

- The Zhilandy area is located in Eskeldy Dc, Almaty Oblast, at 15 km south of Tekeli city, within medium-altitude area of Sarynakoi and Suuksu mountain ridge.
- The area access is via motor and earth roads. Average altitude is 2,100 masl; A 35kV and 100kV HVPL are at 3 and 15 km, respectively.
- The nearest railroad station is at 15 km. The nearest airport is at 35 km in Taldykorgan; Almaty International airport is at 270 km.
- Qualified personnel available in Tekeli (27,000) and Taldykorgan (127,000)
- The Moinak Hydro-Electro Station was commissioned In 2011, with a total capacity of 300 MW



Fig. 1 The area infrastructure

- The automobile highway Almaty - Ust-Kamenogorsk under realization in Y 2012 - Y2020

## КОНТРАКТНАЯ ТЕРРИТОРИЯ

- The License is 66.5 km<sup>2</sup>
- The Zhilandy area is tentatively divided into three prospects:
  1. **Suuksu** ore field in black shale Vendian sediments.
  2. The **Birinshi deposit** within a fragment of Early Devonian volcanic structure
  3. **Center group** comprising of **Mynbulak-Otmetka-Konyzdar-Zhiliandy-Terekty-Vostok-Zhabyk-Konyzdar** in exocontact zone of Zhilandy – Kusak granodiorite-tonalite laccolith of Upper Riphean age

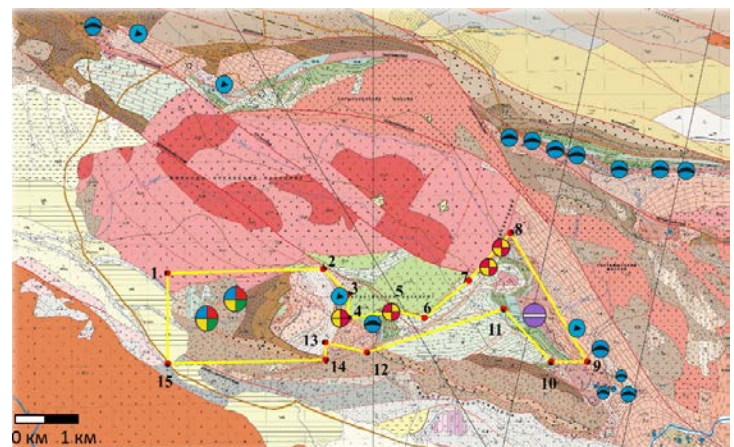


Fig. 2 The contract territory

## EXPLORATION DATA

Prospecting traverses:  
• 209 linear kilometers.

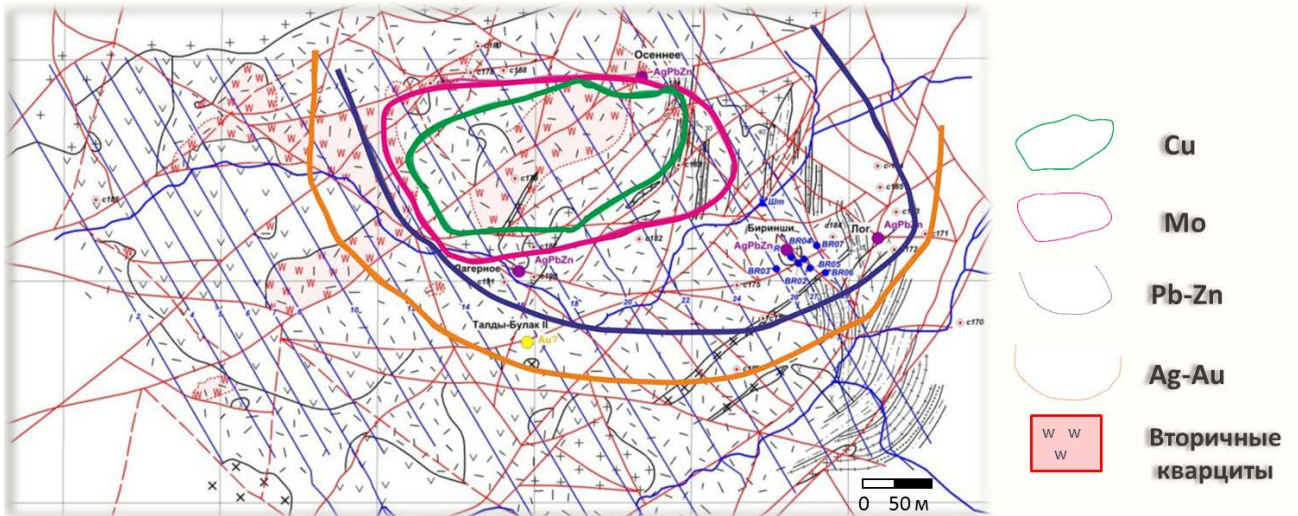
Trenching:  
• 58 trenches  
• 13,148 m<sup>3</sup>

Drilling with core sampling:  
• 20 core drilling wells  
• 39 mapping wells  
• 5,724 l.m.

Working sampling  
**14 115 samples**

## PRECAUTIONS FOR DISCOVERING THE LARGE COPPER PORPHYRY STRUCTURE (MPS)

1. Structural (tectonics, the Balkhash-Ili volcanic belt);
2. The presence of geophysical anomalies (magnetic, polarization, electrical resistance);
3. Complex geochemical anomalies;
4. Zoning;
5. Metamorphism (zone of secondary quartzites, propylites);
6. Stems of granites and granodiorites.



**Pic. 3 Zoning**

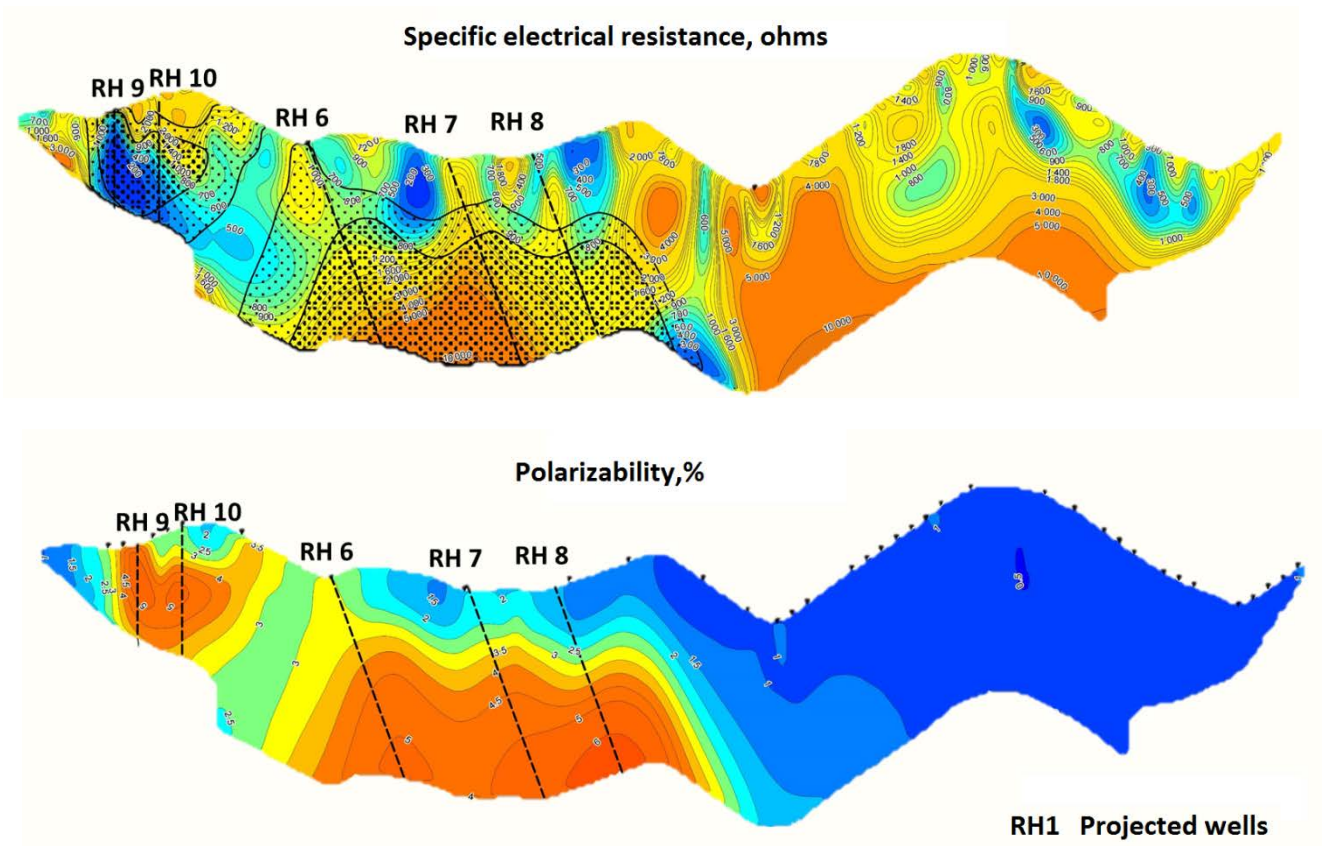
Molybdenum together with the copper occupies the central part of the anomaly, while the lead and zinc are in peripheral region, which is typical for the structure of copper-porphyry geochemical fields (Sillitoe, R.H.).

- The upper parts of the copper-porphyry structure are characterized by the presence of a zone of apoargillites and secondary quartzites (lithocap): a lithologically controlled zone of changes consisting of argillites, apoargillites and secondary quartzites
- In more cases, these zones are erosive remains that partially or completely overlap copper-porphyry deposits or appear laterally over (in) the zone of propellitization



**Pic. 4 Secondary quartzites of the Zhilandinskaya area**

March 2018



Pic. 55 Inverse geoelectric section along profile 20

#### WORKING PROGRAM Y2018

- To verify geochemical and geophysical anomalies and trace the ore body to a depth, it is necessary to perform 10,000 lm of core drilling.
- As a result of the work carried out, it is expected to obtain a principle assessment of the copper-porphphy structure.
- **The estimated forecast of resources are 5 million tons of copper and 140 tons of gold.**

#### CONTACT INFORMATION

Mr. Ilya Kamenskiy  
 Director, "Zhilandy" LLP  
 Mobile: +77770252501  
 E-mail: ikamenskiy15@gmail.com

Mr. Alimbek Seidullayev  
 President, "Tin One Mining"  
 Mobile: +77017147300  
 E-mail: alimbek@tinone.kz

Mr. Akhmetzhan Abdullayev  
 Partner, DATA Invest  
 Mobile: +77017723283  
 E-mail: akhmetzhan@gratanet.com